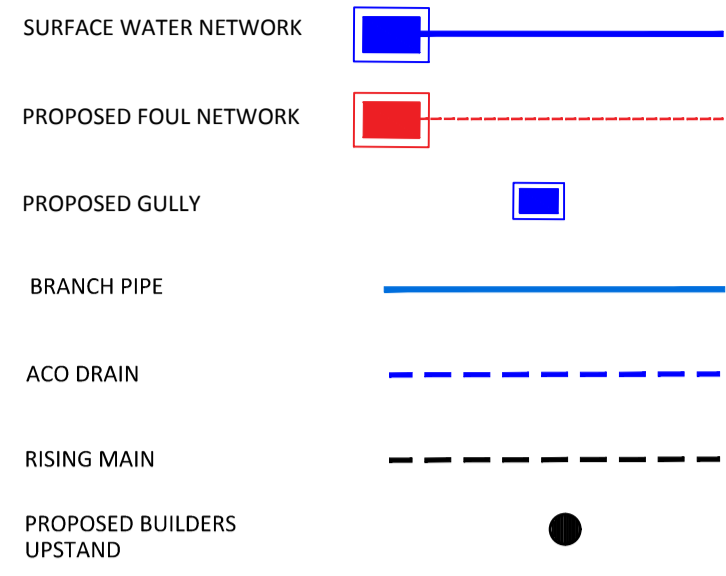


**LEGEND**



USMH	USCL (m)	Pipe Number	USIL (m)	Slope (1:X)	Dia (mm)	OSIL (m)
S1	27.625	S1.000	26.725	100.0	150	26.292
S2	27.625	S1.001	26.292	100.0	150	26.242
S3	27.600	S1.002	26.242	100.0	150	25.800
S4	27.600	S1.003	25.800	100.0	150	25.266
S5	27.625	S1.004	25.266	100.1	150	25.120
S6	27.625	S2.000	26.725	100.0	150	26.478
S7	27.600	S2.001	26.478	100.0	150	26.145
S8	27.625	S3.000	26.725	100.0	150	26.481
S9	27.625	S2.002	26.145	100.0	150	25.928
S10	27.625	S4.000	26.725	100.0	150	26.474
S11	27.625	S2.003	25.928	100.0	150	25.615
S12	27.625	S1.005	25.120	100.1	150	24.885
S13	27.625	S5.000	26.500	100.2	150	26.306
S14	27.125	S5.001	26.306	100.2	150	26.112
S15	27.625	S5.002	26.112	100.0	150	25.873
S16	27.625	S5.003	25.873	99.8	150	25.617
S17	27.625	S1.006	24.885	100.0	150	24.794

**CARNLOUGH RD**

**SMILEY RD**

ALL DRAINAGE FALLS @ 1:80 WITH  
HP's = 27.625m & LP's = 27.525m

- NOTES:**
1. ALL PIPES TO BE SIZED AND LAID AS NOTED;
  2. ALL POP-UP LOCATIONS AND SIZES TO BE CONFIRMED WITH ARCHITECTS & M&E DRAWINGS;
  3. ALL SURFACE WATER PIPES TO BE UPVC OR SIMILAR APPROVED;
  4. ALL INTERNAL DRAINAGE IN ACCORDANCE TO THE BUILDING REGULATIONS PART H;
  5. ALL 100mmØ SURFACE PIPES TO BE LAID @ 1:100 GRADIENT UNLESS OTHERWISE NOTED;
  6. ALL 100mmØ FOUL PIPES TO BE LAID @ 1:80 GRADIENT UNLESS OTHERWISE NOTED;
  7. NON RETURN VALVES TO BE TIDEFLEX IN LINE CHECK VALVE OR SIMILAR APPROVED AT PIPE OUTLETS;
  8. ALL CHAMBER COVERS TO BE D400 RATED;
  9. ALL FOUL CHAMBERS TO HAVE DOUBLE-SEALED COVERS;
  10. SADDLE CONNECTIONS TO BE PROVIDED AT ALL BRANCH CONNECTIONS TO MAIN DRAINAGE NETWORKS, UNLESS AT MANHOLE;
  11. ALL RISING MAINS ARE TO BE EN598;
  12. ALL NOTED PIPE DIAMETERS ARE INTERNAL.

ALL DRAINAGE WORKS TO BE COMPLETED IN ACCORDANCE WITH THE STANDARD DETAILS DRAWINGS AND THE WRITTEN SPECIFICATIONS DOCUMENT 'SITE DEVELOPMENT WORKS\_REV\_06'.

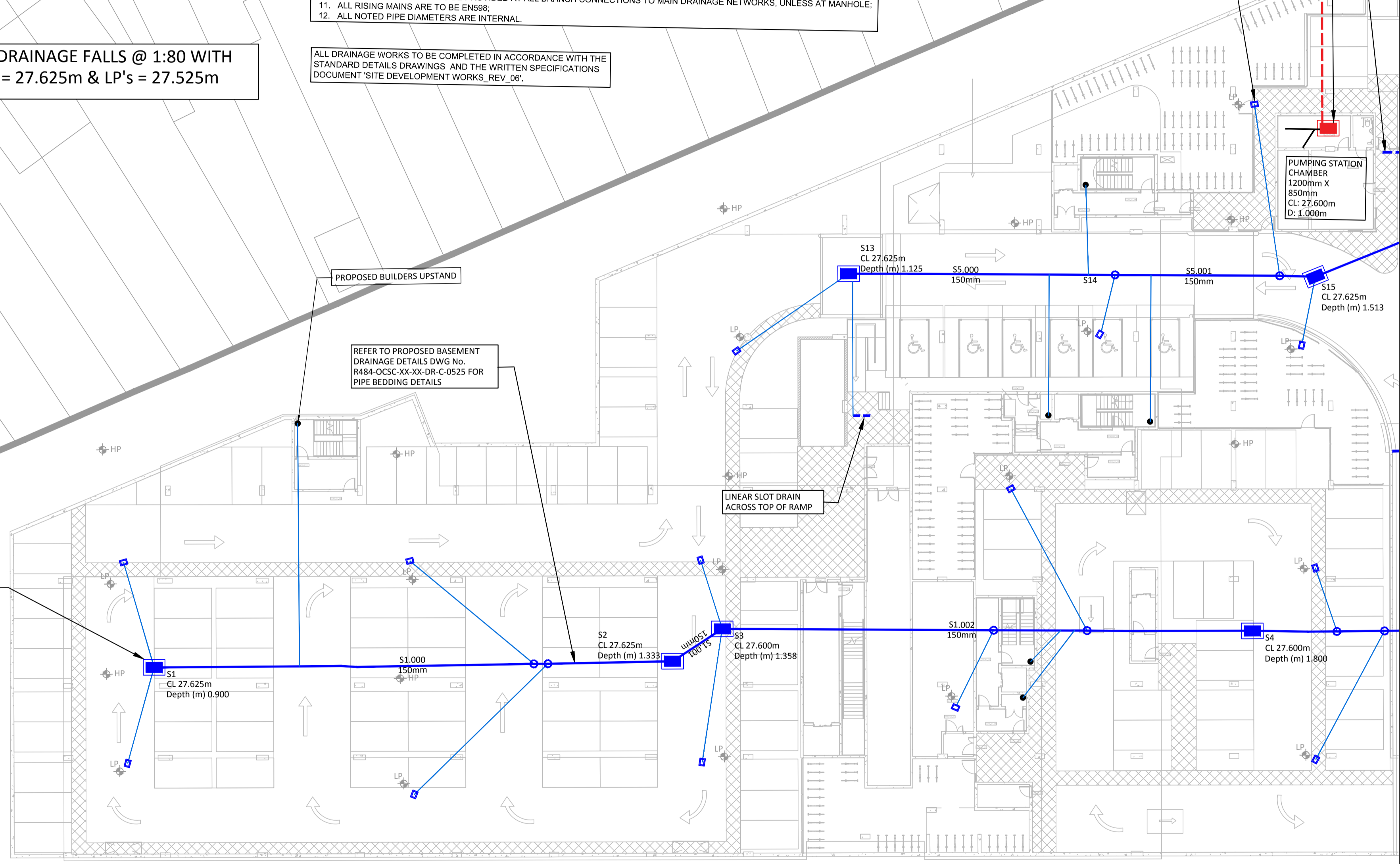
ALL DRAINAGE CHANNELS TO BE ACO MULTIDRAIN M1000 10.0 OR SIMILAR APPROVED WITH CONSTANT INVERT. CHANNELS TO INCLUDE VERTICAL KNOCKOUT FOR CONNECTION TO 110mmØ UPVC PIPE. ALL GRATINGS TO BE HELI GUARD DUCTILE IRON 23405DL.

ALL GULLY CHAMBERS  
450mmx300mm  
CL: 27.500m  
IL: 26.375m  
D: 1.125m  
PIPE IL @ 26.825m

LOWARA MIDBOX  
DOC7VX PUMPING  
STATION WITH DOMO  
10(T) PUMP OR SIMILAR  
APPROVED

100mmØ HDPE (PE100  
PN10 SDR17) RISING  
MAIN TO STAND OFF  
MANHOLE ABOVE

PUMPING STATION  
CHAMBER  
1200mm X  
850mm  
CL: 27.600m  
D: 1.000m



**PLANNING DRAWING.**  
NOT FOR CONSTRUCTION.  
ALL LEVELS GIVEN ARE  
RELATIVE TO ORDNANCE DATUM.  
THIS DRAWING HAS BEEN ISSUED FOR INFORMATION  
PURPOSES ONLY AND MUST NOT BE USED  
FOR CONSTRUCTION UNDER ANY CIRCUMSTANCES

ORDNANCE SURVEY OF IRELAND LICENCE NO. EN0000819 © GOVERNMENT OF IRELAND

- FOR SETTING OUT REFER TO ARCHITECT'S DRAWINGS.
- THIS DRAWING TO BE READ IN CONJUNCTION WITH ALL OTHER ARCHITECTURAL AND ENGINEERING DRAWINGS AND ALL OTHER RELEVANT DRAWINGS AND SPECIFICATIONS.
- DO NOT SCALE THIS DRAWING. USE FIGURED DIMENSIONS ONLY.
- NO PART OF THIS DOCUMENT MAY BE REPRODUCED OR TRANSMITTED IN ANY FORM OR STORED IN ANY RETRIEVAL SYSTEM OF ANY NATURE WITHOUT THE WRITTEN PERMISSION OF O'CONNOR | SUTTON | CRONN AS COPYRIGHT HOLDER EXCEPT AS AGREED FOR USE ON THE PROJECT FOR WHICH THE DOCUMENT WAS ORIGINALLY ISSUED.

Rev No.	Date	Revision Note	Drn by	Chkd by
P01	03.07.19	SUITABLE FOR INFORMATION	AF	SD
C01	01.10.19	STAGE COMPLETE - SUITABLE FOR CONSTRUCTION	DOM	SD
C02	10.10.19	BASEMENT LAYOUT UPDATED	DOM	SD
C03	11.10.19	ISSUED FOR PLANNING	DOM	SD

Rev No.	Date	Revision Note	Drn by	Chkd by



Head Office,  
9 Prussia Street,  
Dublin 7,  
D07 KT57

TEL +353 (0)1 8682000

e: [contactus@ocsc.ie](mailto:contactus@ocsc.ie)  
w: [www.ocsc.ie](http://www.ocsc.ie)

Dublin | London | Belfast | Galway | Cork

Client: SEVEN CABRA REAL ESTATE LTD.  
Project: HAMILTON GARDENS  
CARNLOUGH ROAD, CABRA  
Title: PROPOSED BASEMENT DRAINAGE LAYOUT  
SHEET 2 OF 3

Code	Originator	Zone	Level	Type	Role	Number	Status	Revision
R484	OCSC	XX	XX	DR	C	0506	A1	C03

Date: 03.07.19 Scale: 1:250 @ A1 Drn by: AF Chkd by: SD Aprvd by: AH